

# Annual Report

2024-2025



Environment and Population Research Centre

# ANNUAL REPORT

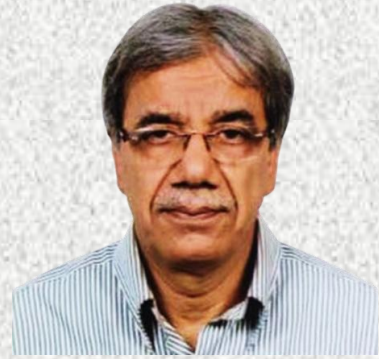
2024-2025

Published	: October 2025
Chief Editor	: Prof. Dr. M Mozzammel Hoque, Executive President
Editorial Adviser	: Dr. Sufia Khanam, Deputy Executive President
Script, Concept and Design	: Tofayel Ahmed, Program Director
Data and Information	: Md. Anisur Rahman, Assistant Coordinator (Admin) Sohel Ahmed, GIS Specialist and M&E Coordinator Abu Zahid Shipon, Assistant Coordinator Engineering
Published by	: Environment and Population Research Centre (EPRC) Mohakhali DOHS, Dhaka-1206 Tel: +88-02-222-262772 E-mail: eprchq@yahoo.com Web: www.eprcbd.org

## Message from the Executive President

Welcome to our 2024-2025 Annual Report of Environment and Population Research Centre (EPRC).

In the pleasant moment of publishing annual report 2024-2025 I deeply mourn for the founding Executive President Dr. Bilqis Amin Hoque who left us on 1st of August 2023. She served this position until her death and brought EPRC to its highest peak of fame. I commemorate all of her good deeds in painful heart. May Almighty grant Jannatul Ferdaous for the departed soul. Her memory, ideology and spirit will be with us to guide in the future even in her absence.



Since its foundation in 1998 EPRC has gained immense competence and became acquainted in national and international arena. I am grateful to everyone who contributed and dedicated themselves to this endeavor. We had carried out multi-disciplinary various researches covered by four projects in environment, water, sanitation, hygiene, health, agriculture, food security, education, disaster risks reduction, climate change adaptation and mitigation, renewable energy, occupational safety and health, and livelihood. We have applied engineering, technological, technical, policy, gender, monitoring, social science, education, governance and/or other approach to carry out the research in rural, urban, slum, and disaster areas/conditions.

We have successfully completed three multidimensional projects covering core programs of EPRC by the year-end while remaining one are underway. Reaching approximately about 698,543 people through capacity building, awareness raising, training, education, and access to improved technology is indeed a great success for the organization.

We have observed that the women members of local level government institution, the Union Parishad can lead the rural sanitation program and development of indicators for water & sanitation towards sustainable development goal (SDG), rural & urban safe drinking water system, community-based pipe water supply, and integrated renewable energy & pipe water supply in arsenic affected areas. They can also lead the development of menstrual hygiene management system in schools & communities, building non-communicable disease awareness among rural & urban poor, occupational health & safety, women & children-based disaster risks reduction, integrated organic agriculture & environmental health, and other areas of research. EPRC has initiated an action research to develop mobile App based drinking water quality monitoring system in the urban areas.

Since 2000, EPRC has been hosting the secretariat and playing the global chair of GARNET-SA. GARNET-SA promotes capacity building through demand-based knowledge exchange, collaborative research and student fellowship in WASH, environment, and agriculture among practitioners and students. Currently GARNET-SA, a voluntary network, is linked to about 560 members' organizations. Two institutions for offering short courses and diploma have been initiated; while the mobile water and agricultural & environmental laboratory, and the well-developed library strengthened.

Our sincere gratitude and thanks to the government of the People's Republic of Bangladesh, our donor agencies, partners, collaborators, members of the Executive Committee, advisors, school teachers, community people, religious leaders, and all the staffs of EPRC who helped EPRC greatly in undertaking the activities with active co-operations and important suggestions.

The EPRC family looks forward to working with all in future.

A handwritten signature in black ink that reads "Mozzammel Hoque". The signature is written in a cursive style.

**Prof. M. Mozzammel Hoque, Ph. D**  
Executive President, EPRC

# Table of Contents

<u>Contents</u>	<u>Page No.</u>
Message from the Executive President	1
<b>PROFILE OF EPRC</b>	<b>4-11</b>
About EPRC	4
Legal Affiliation	6
Membership and MoU	7
Areas of Interest	7
Special Focus	8
Addressing SDG Goals	8
Working Areas of EPRC	9
Working Area Map of EPRC	10
EPRC Financial Achievements and Population Served	11
<b>CHAPTER 1: WATER, SANITATION, AND HYGIENE TOWARDS SDG</b>	<b>12-22</b>
Overview	12
1.1 Safe Drinking Water Supply	13
1.2 Promotion of Sanitation	15
1.3 Promotion of Hand Hygiene	17
1.4 Promotion of Menstrual Hygiene	19
1.5 Promotion of Water Safety Planning	21
<b>CHAPTER 2: SUSTAINABLE AGRICULTURE, FOOD, AND ENVIRONMENT</b>	<b>23-24</b>
Overview	23
2.1 Sustainable Agriculture and Food Security	24
<b>CHAPTER 3: DISASTER RISK REDUCTION AND CLIMATE CHANGE ADAPTATION AND MITIGATION</b>	<b>25-28</b>
Overview	25
3.1 Arsenic Mitigation in Climate Vulnerable Regions	26
3.2 Emergency Response to Northeastern Flood In 2024	28
<b>CHAPTER 4: PUBLIC HEALTH</b>	<b>29-30</b>
Overview	29
4.1 Ensure Public Health Through Wash Program	30
<b>CHAPTER 5: EDUCATION, TRAINING, AND CAPACITY BUILDING</b>	<b>31-37</b>
Overview	31
5.1 Out of School Children (OOSC) Education Program	32
5.2 Gender Equality in Integrated Water Resources Management (IWRM)	33
5.3 Capacity Building and Skill Enhancement of Private Sector Engaged in Safe Drinking Water	34
5.4 GANET-SA Program	36
<b>CHAPTER 6: QUEST HUMANITY PROGRAM</b>	<b>37-43</b>
Overview	37
6.1 Bridging Futures: Integrated Learning & Life Skills For Orphaned and Disadvantaged Youth	38

# Table of Contents

<u>Contents</u>	<u>Page No.</u>
6.2 Education & Nutrition Program for Underprivileged Children	39
6.3 Transforming Lives Through Learning: Women's Education & Awareness Program	40
6.4 Caring for Mothers, Nurturing Futures: Nutritional Support & Awareness for Pregnant	41
6.5 Restoring Dignity Through Direct Support: Financial Assistance for Disadvantaged Families	42
6.6 Building Pathways to Economic Independence: Skills Training & Resource Support for Marginalized Communities	43
<b>OUR DEVELOPMENT COLLABORATORS AND PARTNERS</b>	<b>44</b>

## ABBREVIATIONS

<b>ADB</b> – Asian Development Bank	<b>IEC</b> – Information, Education and Communication
<b>AIRP</b> – Arsenic Iron Removal Plant	<b>INGO</b> – International Non-Governmental Organization
<b>ASFEC</b> – Agency for Social, Forestry & Environmental Conservation	<b>IWRM</b> – Integrated Water Resources Management
<b>BAU</b> – Bangladesh Agricultural University	<b>MIS</b> – Management Information System
<b>BCSIR</b> – Bangladesh Council of Scientific & Industrial Research	<b>MHM</b> – Menstrual Hygiene Management
<b>BEFAQ</b> – Befaql Madarisil Arabia Bangladesh	<b>MoU</b> – Memorandum of Understanding
<b>BIN/VAT</b> – Business Identification Number / Value Added Tax	<b>NGO</b> – Non-Governmental Organization
<b>BMU</b> – Bangladesh Medical University	<b>O&amp;M</b> – Operation and Maintenance
<b>BRAC</b> – Bangladesh Rural Advancement Committee	<b>OOSC</b> – Out of School Children
<b>CBO</b> – Community-Based Organization	<b>ODF</b> – Open Defecation Free
<b>CMS</b> – Consultant Management System (ADB)	<b>ORS</b> – Oral Rehydration Solution
<b>CR-WSP</b> – Climate-Resilient Water Safety Planning	<b>PEDP-4</b> – Primary Education Development Program (Phase 4)
<b>CSA</b> – Community Situation Analysis	<b>PSTU</b> – Patuakhali Science and Technology University
<b>DACOB</b> – Development Association for Cooperation in Bangladesh	<b>PSF</b> – Pond Sand Filter
<b>DDM</b> – Department of Disaster Management	<b>QH</b> – Quest Humanity
<b>DOE</b> – Department of Environment	<b>RO</b> – Reverse Osmosis
<b>DPHE</b> – Department of Public Health Engineering	<b>RWH</b> – Rainwater Harvesting
<b>DTW</b> – Deep Tube Well	<b>SBC</b> – Social Behavioral Change
<b>DU</b> – Dhaka University	<b>SDG</b> – Sustainable Development Goal
<b>DUNS</b> – Data Universal Numbering System	<b>TIN</b> – Tax Identification Number
<b>EPRC</b> – Environment and Population Research Centre	<b>UNICEF</b> – United Nations Children's Fund
<b>FGD</b> – Focus Group Discussion	<b>USAID</b> – United States Agency for International Development
<b>GARNET-SA</b> – Global Applied Research Network – South Asia	<b>VAT</b> – Value Added Tax
<b>GIS</b> – Geographic Information System	<b>WARPO</b> – Water Resources Planning Organization
<b>GO</b> – Government Organization	<b>WASH</b> – Water, Sanitation and Hygiene
<b>GPS</b> – Global Positioning System	<b>WATSAN</b> – Water and Sanitation
<b>IBRAD</b> – Indian Institute of Bio-Social Research and Development	<b>WEDC</b> – Water, Engineering and Development Centre (Loughborough University, UK)
<b>ICDDR</b> – International Centre for Diarrhoeal Disease Research, Bangladesh	<b>WHO</b> – World Health Organization
	<b>WMG</b> – Water Management Group
	<b>WSP</b> – Water Safety Plan

## Profile of EPRC

### About EPRC

The Environment and Population Research Centre (EPRC), founded in 1998, is a multidisciplinary, non-governmental institution dedicated to research, development, education, training, and networking. It was established by the nationally and internationally renowned researcher Dr. Bilqis Amin Hoque, a distinguished academic and development professional. She held prestigious positions with ICDDR, B and the World Bank. Until her passing, she served as an Adjunct Professor at Emory University, USA. Guided by its Vision and Mission, EPRC works in a variety of fields, including WASH (Water, Sanitation, and Hygiene), water resources, food security, agriculture, organic farming, renewable energy, satellite-based smart irrigation, wastewater management, environmental protection, disaster risk reduction, climate change adaptation and mitigation, education, indoor air quality, public health, occupational health and safety, infrastructure, and related social and policy issues at local, regional, and global levels. A key focus of EPRC's development initiatives is managing water resources and promoting human rights and gender equity, particularly for socially disadvantaged communities, with an emphasis on women.

EPRC has successfully carried out its mission by implementing strategic research, academic, and development activities aimed at achieving sustainable outcomes. It collaborates with government agencies, non-governmental organizations, and donor agencies in Bangladesh and internationally.

EPRC operates 27 field offices across Bangladesh, with its head office located in Dhaka. The organization also runs an environmental and basic food testing laboratory, an MIS & data center, a training center, an educational institution, and a makeshift health clinic for marginalized populations in Gazipur and Uttar Matlab, Chandpur. EPRC is structured into 13 cells/sections: Human Resources, Finance, Social Behavioral Change (SBC), Capacity Building, Advocacy, Training and Research, GIS & MIS, Fundraising and Public Relations, Gender, Monitoring & Evaluation, Internal Audit, Disaster Management, Administration, Logistics, and Procurement.

EPRC coordinates the Global Applied Research Network for Water, Sanitation, Hygiene, Environment, and Agriculture-South Asia (GARNET-SA), a network of over 600 member organizations. The network is guided by an advisory committee that includes members from Bangladesh and other regional countries. The GARNET-SA chapter in India is coordinated by the Indian Institute of Bio-Social Research and Development (IBRAD) in West Bengal, India, in collaboration with EPRC.



EPRC works closely with grassroots community-based organizations (CBOs), local government bodies, institutions, Water Management Groups (WMGs), and other stakeholders. It has pioneered capacity-building initiatives for vulnerable women, empowering them to start small businesses in sectors such as agriculture, food processing, improved cooking stoves, nursery management, sanitation, safe drinking water supply, and other livelihood improvement/income-generating activities.

EPRC has extensive experience in social mobilization and capacity development through group formation, need-based training on crop production technology, tailoring, paramedical services, veterinary care, small-scale fruit cultivation, and other self-improvement groups (SIGs). The organization also develops a wide range of training materials, including IEC (Information, Education, and Communication) materials, BCC (Behavioral Change Communication) tools, posters, leaflets, flashcards, billboards, and audiovisual resources. In addition, EPRC organizes and hosts short training courses, workshops, and postgraduate research in collaboration with institutions and universities from Bangladesh, India, USA, Netherlands, Japan, Denmark, and other countries.

EPRC employs a permanent team of professionals with expertise in environmental issues, water resources, civil engineering, social sciences, economics, public health, business management, statistics, sociology, agriculture, renewable energy, disaster risk management, climate change, food security, drinking water, sanitation, hygiene, air quality, local government, and capacity building. When needed, qualified registered associate members and short-term professionals are brought in from various sources, including GARNET-SA member organizations, to support specific projects. Over the years, EPRC has been involved in more than 100 projects across Bangladesh and internationally, achieving a strong record of success. In summary, EPRC has considerable experience and a deep commitment to sustainable development in both normal and disaster/emergency conditions, working in rural and urban areas alike.



### **Vision:**

To redress suffering of the community people, especially the poor through appropriate management of resource at local, regional and global levels.



### **Mission:**

To undertake strategic research, training, technical service, laboratory analysis, information exchange, and networking for effective and sustainable achievements in targeted development programs irrespective to religion, cast and creed.

### **Objective**

EPRC aims to contribute to sustainable development by advancing knowledge, technology, and the management of human & natural resources. It focuses on institutional capacity building, monitoring and evaluation, and addressing policy issues. Key strategic objectives include developing innovative technologies and techniques, enhancing the capacities of men, women, and children, and fostering collaboration with national & international organizations, including governments, NGOs, and academic institutions. EPRC works in rural, urban, and coastal regions both in normal and disaster conditions in Bangladesh as well as in the other countries.

## Legal Affiliation

**Year of Establishment**

1998

**NGO Affairs Bureau Reg. No.**

1674

**Joint Stock Companies Registration No.**

52746  
(159)/2002

**ADB CMS Registration No.**

040782

**USAID DUNS No.**

731607292

**TIN No/Circle 93**

145072908857

**BIN/VAT No.**

002067868-0101

**Trade License No.**

TRAD/DNC  
C/084788/2  
022

# Membership and MoU



**Bangladesh Medical University (BMU), Dhaka,**



**Patuakhali Science and Technology University (PSTU), Patuakhali, Bangladesh**



**Jagannath University, Dhaka, Bangladesh**



**Bangladesh Agricultural University (BAU), Mymensingh**



**Rajshahi University, Bangladesh**



**Institute of Bio-Social Research and Development (IBRAD), India**



**Pabna University of Science and Technology**



**Global Water Partnership**



**Dhaka University**

# Areas of Interest



**Drinking Water and Water Safety Plans**



**Water Resources**



**Wastewater & Waste**



**Hygiene & Sanitation**



**Air, Soil & other Environment**



**Public Health**



**Occupational Safety**



**Agriculture & Forestry**



**Food Security & Nutrition**



**Education & Training**



**Fisheries**



**Disaster Risks Management**



**Climate Change Adaptation and Mitigation**



**Energy**



**Infrastructure**

# Special Focus

Graduate and Post graduate Research and Educational Collaboration

Technology and Technique Development

Women and Children Capacity Building and Development

Small NGOs Capacity Building

Collaboration with GO, NGO, INGO & Academic Institutions

Analysis of Environmental Samples at Laboratory & Field Level

Practical Use of GIS and Remote Sensing

Realization of SDG and other National and International Commitments

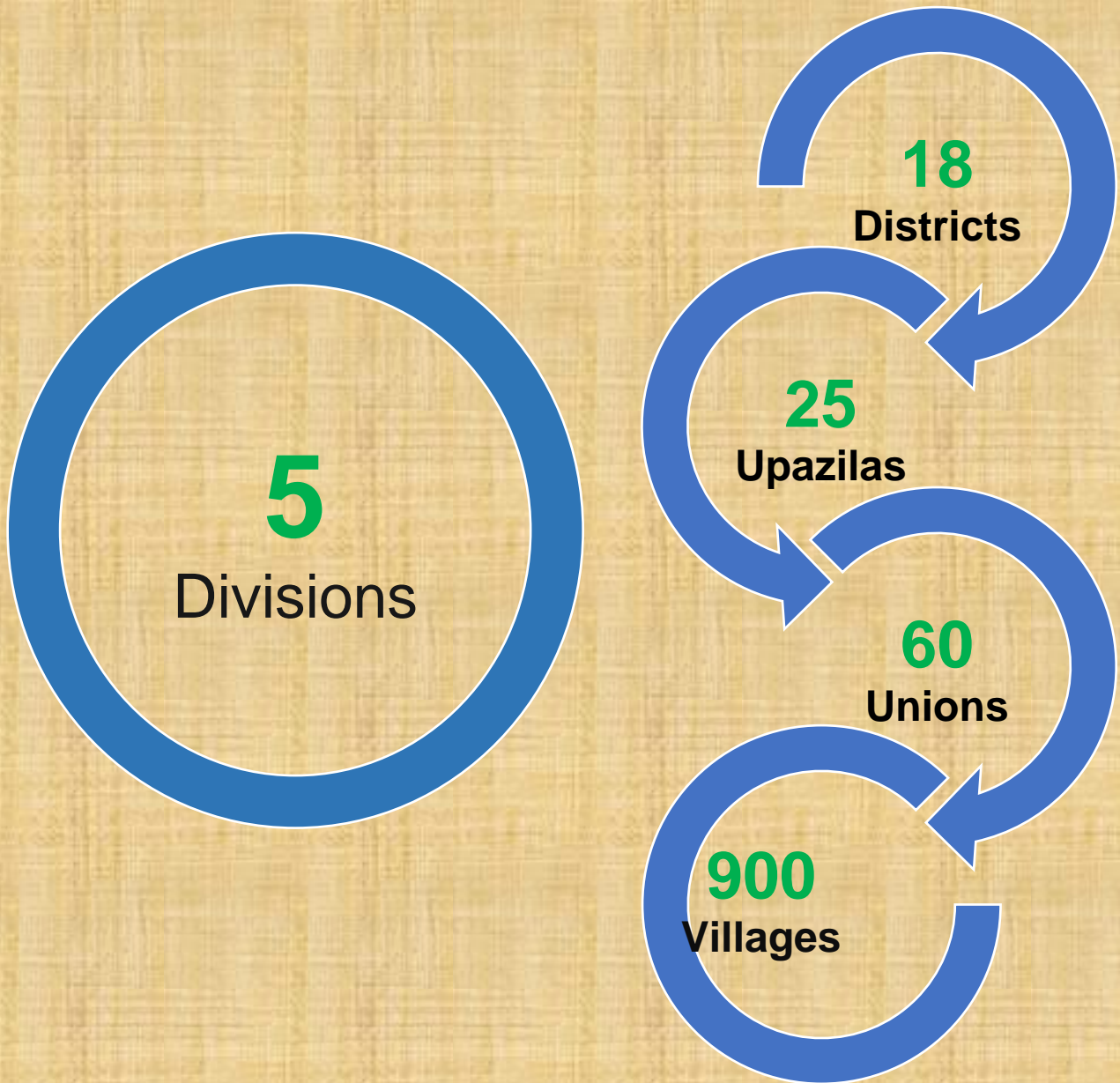
Networking

# Addressing SDG Goals



# Working Areas of EPRC

**Working Areas**  
As of June 2025

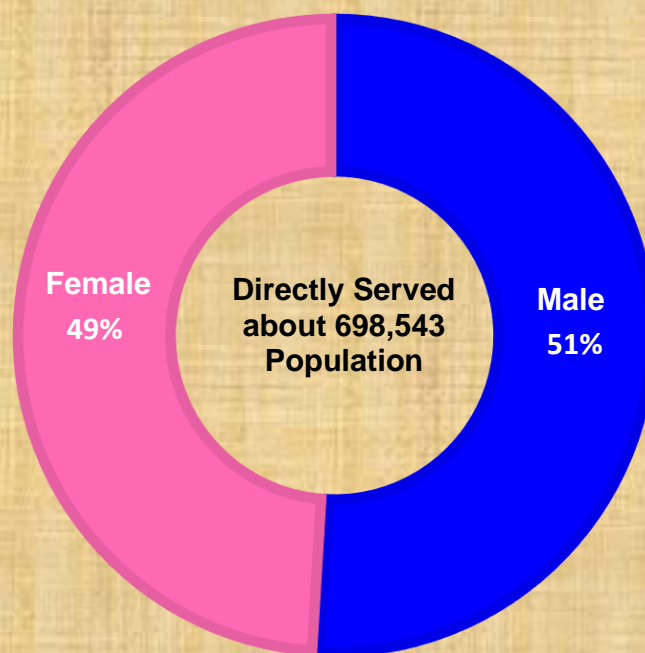
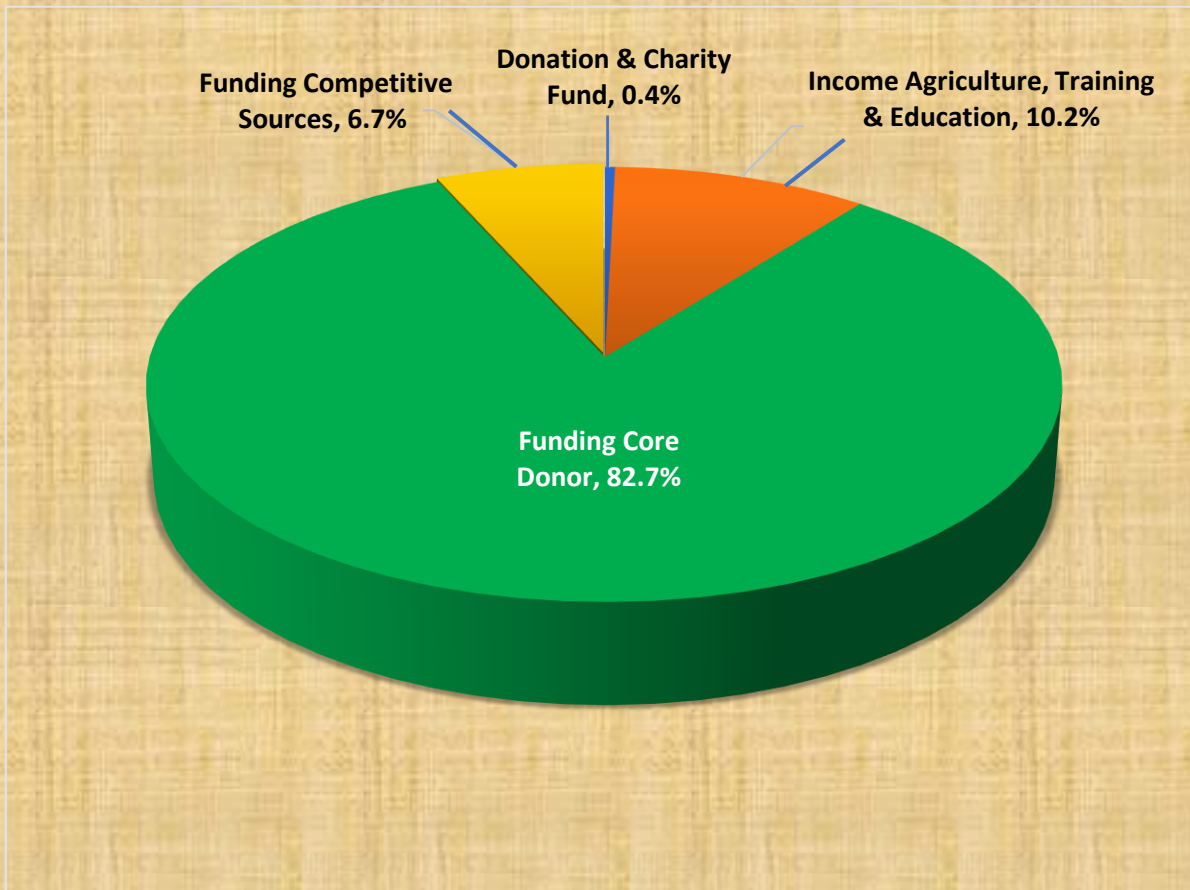


# Environment and Population Research Centre (EPRC) Working Area Map 2024-2025



# EPRC Financial Achievements and Population Served

---



# 1. Water, Sanitation and Hygiene towards SDG

## Overview

In the 2025 edition of the *Sustainable Development Report*, Bangladesh ranked 114th out of 167 countries with an SDG Index score of 63.9 out of 100. This position placed the country ahead of India, Pakistan, and Afghanistan in South Asia, but behind Bhutan, Maldives, Sri Lanka, and Nepal. The ranking underscores both the progress made and the challenges that remain in achieving SDG 6 – “Clean Water and Sanitation for All.” While Bangladesh has made substantial gains in expanding access to improved water sources and basic sanitation services, millions—particularly those living in arsenic-affected, saline-prone, and disaster-vulnerable regions—still lack access to safe, equitable, and climate-resilient WASH services. These shortfalls pose significant risks to public health, economic development, and climate resilience.

Throughout 2024-2025, EPRC’s WASH initiatives directly targeted these critical challenges through a comprehensive, community-centered approach. Interventions were designed to serve the most vulnerable populations, with a particular emphasis on women, children, and the ultra-poor. Key strategies included arsenic mitigation in high-risk zones, rehabilitation and installation of safe water points, promotion of improved sanitation facilities, and behavior change communication for hygiene improvement. At the same time, EPRC strengthened local institutions and community-based organizations through training, capacity development, and the introduction of Water Safety Planning (WSP) mechanisms. The use of digital tools such as GPS mapping, monitoring charts, and community-based reporting systems supported more evidence-based planning and accountability, while participatory approaches facilitated the declaration of arsenic-safe and Open Defecation Free (ODF) communities.

Despite these achievements, the WASH sector continues to face systemic barriers. Water quality challenges—such as high levels of arsenic, salinity intrusion, and contamination—remain widespread. Budgetary allocations for WASH have reportedly declined in 2024-2025, threatening the sustainability of gains in climate-vulnerable areas. In addition, institutional capacity gaps, fragmented coordination among stakeholders, and equity challenges for hard-to-reach and marginalized groups continue to limit progress.

Looking ahead, EPRC will focus on scaling climate-resilient infrastructure, especially in high-risk regions, while advocating for increased public and private investment in the WASH sector. Efforts will also concentrate on strengthening digital monitoring systems, expanding GIS-based planning, and deepening community engagement in hygiene promotion, including menstrual hygiene. By reinforcing institutional capacities and promoting sustainable, community-owned systems, EPRC remains committed to advancing Bangladesh’s journey toward SDG 6, ensuring access to safe water, sanitation, and hygiene for all—thereby protecting public health, empowering communities, and building long-term climate resilience.



## 1.1 SAFE DRINKING WATER SUPPLY

### Approach

In 2024–2025, EPRC continued to advance its safe drinking water agenda with an approach anchored in equity, resilience, community stewardship, and evidence-driven planning. With arsenic contamination and climate-induced challenges—such as salinity intrusion, drought, and water scarcity—remaining critical threats, the Centre prioritized the roll-out of climate-smart and locally adaptable water technologies in hydro-geologically stressed regions. Arsenic mitigation remained at the forefront, with intensive interventions in unions and pourashavas where more than 60% of tube-wells were unsafe. Equity-sensitive site selection criteria ensured that ultra-poor, marginalized, and geographically hard-to-reach households were prioritized.

Strengthening innovation remained a core strategy. Building water governance—enabling citizens, local governments, and service providers to monitor water quality, request repair services, process payments, and access awareness resources. By enhancing responsiveness and accountability, the platform contributed to more reliable and inclusive piped water services.

Capacity development was reinforced through the mobilization and training of thousands of Water Point Operation & Maintenance (O&M) Committees and Community-Based Organizations (CBOs). Complementary training for DPHE staff, local government representatives, and NGO partners enhanced their technical and managerial competencies, ensuring greater ownership and long-term sustainability of water safety systems.

Collaboration and evidence-based decision-making continued to guide EPRC’s interventions. Working with local governments, NGOs, research actors, and the private sector, EPRC developed updated GIS-based arsenic risk maps, expanded field monitoring through digital tools, and integrated new datasets into the design of mitigation plans. This decentralized, participatory, and knowledge-driven approach strengthened the scalability of safe water initiatives, while advancing national targets and Sustainable Development Goal 6 (SDG 6).



## Enhanced Access to Arsenic-Safe Water Infrastructure

- *Rehabilitation of non-functional water points:* 230 community-based arsenic-safe water points rehabilitated, benefiting around 22,711 vulnerable people with year-round safe water.
- *New installation and repair of water points:* 6,024 water points established/repared (DTW, Tap Points, RWH, PSF, RO, AIRP) including cyclone Remal project support.
- *GPS mapping of non-functional points:* 376 arsenic-safe water points listed with GPS and cost estimates.
- *Arsenic-Safe declarations:* 691 communities and 89 villages declared arsenic safe with ODF.

## Integration of Digital Tools for Smarter Water Governance

- *GPS digital mapping:* 376 non-functional water points mapped with GPS (see above).
- *Data collection systems:* KOBO administered baseline surveys covering 1,800 households and 1,894 Community Situation Analyses (CSA).
- *Water Safety Planning (WSP) corners:* 36 WSP corners set up at Union Parishads.
- *Monitoring charts:* 45 monitoring charts installed at Union/Upazila DPHE offices.

## Strengthening Community Ownership and Operational Management

- Formation of CBOs: 1,894 community-based organizations formed.
- O&M Committees for water points: 14,235 committees, involving ~498,546 people oriented on O&M and CR-WSP.
- WATSAN committees re-activated: 36 WATSAN committees functional, holding 113 meetings with 863 participants.
- Entrepreneurship groups trained: 123 local entrepreneurs trained on arsenic-safe water business, planning, and marketing.
- O&M toolkit distribution: 1,194 CBOs received toolkits.

## Building Local Capacity for Sustainable WASH Solutions

- CBO committee leaders trained: 20,854 leaders trained on WASH, arsenic, and WSP.
- Caretakers trained: 8,207 caretakers trained in O&M and CR-WSP.
- Community orientation sessions: 22,470 people oriented on arsenic and CR-WSP.
- Courtyard sessions: 43,600 courtyard sessions on water, sanitation, and hygiene.
- WASH education outreach: 691,815 people reached with safe WASH education.

## Data-Driven Approaches to Arsenic Risk Reduction and Planning

- Baseline surveys conducted: 1,800 households surveyed + 8 FGDs.
- Community Situation Analysis (CSA): 1,894 CSAs conducted to assess arsenic and WASH risks.
- Declarations of safe status: 691 communities and 89 villages declared arsenic-safe with ODF.
- National/Global campaign integration: World Water Day, MHM Day, Sanitation Month, and Global Handwashing Day celebrated with 200+ events enhancing arsenic awareness at community and institutional levels.



## 1.2 PROMOTION OF SANITATION

### Approach

In 2024–2025, EPRC advanced its sanitation promotion agenda with a focus on empowering communities and ensuring sustainable service delivery. Recognizing that poor and ultra-poor households continue to face barriers to safe sanitation, the program directed its efforts toward the most vulnerable groups. A cornerstone of this strategy was the continued application of the Community-Led Total Sanitation (CLTS) model, which drives collective behavioral change by fostering community-wide decision-making, local leadership, and mutual accountability to eliminate open defecation.

To embed sustainability, EPRC strengthened local capacity through the formation and training of Community-Based Organizations (CBOs) and Water Point Operation & Maintenance (O&M) Committees. These institutions were enabled to take ownership of sanitation planning, oversee management of facilities, and sustain ODF commitments at the grassroots level. At the same time, EPRC worked closely with local government institutions to facilitate ODF declarations and reinforce mechanisms for continuous monitoring, coordination, and enforcement—ensuring that progress achieved translated into long-term sanitation resilience.

### Achievement

#### Transforming Unsafe Sanitation: From Unhygienic to Hygienic Latrines

Over 99,500 unhygienic latrines were converted to hygienic ones, significantly reducing open defecation, environmental contamination, and the spread of waterborne diseases in vulnerable communities.

#### Expanding Access: Construction of New, Improved Sanitation Facilities

Around 1,972 new improved household latrines were constructed, ensuring safe and sustainable sanitation facilities for families who previously lacked access.

#### Achieving Open Defecation Free (ODF) and Arsenic-Safe Communities

A total of 1,463 communities and 203 villages were declared Open Defecation Free (ODF), contributing to improved public health and dignity. Additionally, 691 communities and 89 villages achieved arsenic-safe ODF status, combining safe water access with sanitation to enhance overall resilience.

#### Grassroots Education for Lasting Sanitation Behavior Change

More than 43,600 courtyard sessions were conducted, spreading practical knowledge on hygiene, sanitation, and safe water practices at the grassroots level. Approximately 691,800 people received WASH education, strengthening awareness and collective responsibility for safe sanitation. More than 200 mass awareness events (World Water Day, MHM Day, National Sanitation Month, Global Handwashing Day) mobilized schools, community groups, and local institutions to sustain sanitation practices.

#### Strengthening Sanitation Governance Through Local Institutions

36 WATSAN committees were reactivated and held 113 functional meetings, strengthening local governance and accountability in sanitation management. Over 20,850 community leaders were trained on sanitation, hygiene, arsenic risk reduction, and water safety planning, building long-term local capacity.

#### Equipping Communities with Tools and Messaging for Safe Sanitation

Around 1,194 CBOs were equipped with O&M toolkits, enabling them to effectively maintain water and sanitation facilities. More than 300 wall paintings and 63 billboards were installed in public places, reinforcing key sanitation and hygiene messages for community-wide visibility.



### 1.3 PROMOTION OF HAND HYGIENE

#### Approach

In 2024–2025, EPRC strengthened its hand hygiene promotion efforts by combining behavior change communication, appropriate technologies, and local capacity development to close persistent gaps in hygiene practices—particularly in climate-affected, arsenic-prone, and vulnerable communities. Central to this strategy was the recognition that reliable access to running water is fundamental for effective handwashing, a cornerstone of public health protection against infectious diseases.

To address this, the program expanded the use of affordable, locally designed handwashing stations that ensured consistent access to running water at both household and community levels. Community participation was prioritized, with behavior change communication delivered through courtyard sessions, community campaigns, and live demonstrations, encouraging regular handwashing at critical times.

Capacity building remained a key pillar of the approach. Local stakeholders, frontline health workers, and community leaders were trained to reinforce hygiene messages, demonstrate correct handwashing practices, and sustain ongoing promotion within their communities. Hand hygiene initiatives were also integrated across EPRC’s broader WASH portfolio, ensuring that arsenic mitigation, water safety planning, and sanitation programs collectively enhanced hygiene awareness and practices—ultimately contributing to stronger public health outcomes.



## Achievement

### Scaling Household Hand Hygiene Infrastructure for Safer Communities

Over 102,700 households installed handwashing devices (tippy taps and buckets with taps), ensuring regular practice of handwashing with soap at critical times. More than 99,500 household latrines were upgraded to hygienic standards, which also integrated handwashing facilities for improved sanitation and hygiene.

### Driving Behavior Change Through Community-Centered Communication

Approximately 691,800 community members were reached with WASH education, reinforcing the importance of handwashing and personal hygiene. More than 43,600 courtyard sessions were conducted, providing consistent messaging and dialogue on hand hygiene practices. Over 300 wall paintings and 63 billboards were placed in public spaces, visually promoting handwashing and hygiene behavior across communities.

### Institutionalizing Hygiene in Health and Government Facilities

36 WSP corners and 45 monitoring charts were installed at Union Parishads and DPHE offices, supporting structured hygiene monitoring and safe water–sanitation practices. Functional sanitation and hand hygiene promotion was integrated into public institutions, particularly through 200+ awareness events in schools, CBOs, and Union Parishads.

### Training and Capacity Building for Sustainable Hygiene Practices

Over 20,850 CBO leaders were trained on WASH, arsenic, and climate-resilient water safety planning, incorporating hand hygiene as a key behavioral component. Around 8,200 caretakers were trained to manage and maintain safe water and sanitation systems, including hygiene-supportive infrastructure. More than 123 local entrepreneurs received training on safe water business and hygiene promotion, fostering sustainable hygiene markets.

### Engaging the Public Through Demonstration and Practice

More than 200 public events (World Water Day, National Sanitation Month, Global Handwashing Day, MHM Day) engaged thousands of people through live demonstrations of handwashing and hygiene practices. 43,600 courtyard sessions served as practical platforms for demonstrating proper handwashing techniques and hygiene behaviors at the household and community level.



## 1.4 PROMOTION OF MENSTRUAL HYGIENE

### Approach

In 2024–2025, EPRC continued to integrate menstrual hygiene promotion as a core element within its broader Water, Sanitation, and Hygiene (WASH) initiatives. Recognizing menstrual hygiene as vital to the dignity, health, and well-being of adolescent girls and women—particularly in rural and underserved communities—the program adopted an inclusive, community-centered approach. Menstrual hygiene education was embedded within awareness campaigns, school-based learning, and national WASH-related observances, helping to normalize conversations and reduce stigma around the subject.

To broaden outreach and foster acceptance, EPRC highlighted menstrual hygiene in national observances such as Menstrual Hygiene Day, Global Handwashing Day, and National Sanitation Month. Schools, Community-Based Organizations (CBOs), and local government institutions served as critical platforms for awareness dissemination. Building on existing community mobilization mechanisms—such as courtyard sessions and CBO meetings—the program delivered targeted sessions for adolescent girls, women, and their caregivers.

Partnership and institutional engagement were also central to the approach. Close coordination with local education departments and Union Parishads enhanced institutional support and encouraged community-wide participation. To strengthen communication and learning, EPRC developed and disseminated context-appropriate Information, Education, and Communication (IEC) materials, ensuring stakeholders at multiple levels were informed, sensitized, and empowered to promote better menstrual hygiene practices.



### Creating Safe Spaces for Menstrual Health Education

MHM Day was celebrated in 38 schools and 38 community-based organizations (CBOs) across project areas, creating safe platforms for girls and women to discuss menstrual hygiene practices.

### Mainstreaming MHM into National WASH Campaigns

MHM promotion was integrated with National Sanitation Month and Global Handwashing Day celebrations, reaching thousands of participants with combined hygiene messages.

### Raising Visibility Through Nationwide Awareness Events

More than 200 mass awareness events (World Water Day, National Sanitation Month, Global Handwashing Day, and MHM Day) included menstrual hygiene as a thematic component, linking it with overall WASH practices.



### Community Dialogues to Empower Girls and Women

Courtyard sessions (43,600 in total) provided spaces for women and adolescent girls to openly discuss menstrual hygiene, supported by local leaders and CBO facilitators. Approximately 691,800 people reached with WASH education, which included menstrual hygiene awareness as a cross-cutting theme.

### Normalizing Menstrual Health Through Open Conversations

Through school-based sessions and CBO-level events, taboos and stigma around menstruation were addressed, encouraging girls, boys, and community members to embrace menstrual hygiene as a natural health issue.

### Culturally Responsive IEC for Menstrual Hygiene Advocacy

300 wall paintings and 63 billboards carried WASH and hygiene messages, including menstrual hygiene promotion adapted to local cultural contexts. Localized IEC materials helped break silence and raise acceptance of menstrual hygiene at household and community levels.

### Institutionalizing MHM Through Capacity Building

20,850 community leaders and 8,200 caretakers trained on WASH were also sensitized on menstrual hygiene, enabling them to integrate MHM awareness into broader community programs. 36 WATSAN committees reactivated and capacitated, serving as institutional platforms for menstrual hygiene advocacy alongside safe water and sanitation.

### Advancing National and Global Goals Through MHM Integration

By linking menstrual hygiene with WASH campaigns, school programs, and community engagement, the project contributed directly to SDG 3 (Good Health & Well-being), SDG 5 (Gender Equality), and SDG 6 (Clean Water & Sanitation), as well as to Bangladesh's national WASH strategy.

## 1.5 PROMOTION OF WATER SAFETY PLANNING

### Approach

In 2024–2025, EPRC continued to advance a comprehensive Water Safety Planning (WSP) approach, fully aligned with WHO and UNICEF guidelines, to safeguard drinking water from source to point-of-use in arsenic-affected and climate-vulnerable regions. The strategy emphasized source protection, the adoption of climate-resilient technologies such as DTW, STW, RWHS, and AISRU, and the application of appropriate treatment and disinfection measures. At the household level, safe storage and hygienic handling practices were promoted through the use of jerry cans and water purification tablets to reduce contamination risks.

To ensure safe distribution, community-based pipeline systems were expanded and regularly monitored. More than 3,600 local caretakers and user groups were capacitated with training on operation, maintenance, and risk management to strengthen system sustainability. At the institutional level, WSP Corners were established within Union Parishads, equipped with water quality test kits and illustrated IEC tools, enabling local authorities to conduct regular surveillance, engage communities, and sustain risk-based water management.

1,194 CBOs were equipped with O&M toolkits (adjustable wrench, pliers, check valves, taps, etc.) to maintain water points. 377 community-based fund generation mechanisms were established for rural water points and piped systems, ensuring sustainability of safe water supply.

#### Embedding WSP into Local Government Structures

36 WSP corners were set up at Union Parishads, institutionalizing the practice of water safety planning within local government systems. 36 WATSAN committees reactivated and capacitated to oversee WSP implementation, linking community monitoring with formal governance structures.

#### Achieving Certified Arsenic-Safe and ODF Communities

691 communities and 89 villages were declared arsenic-safe with ODF, reflecting integrated safe water and sanitation achievements under WSP guidance.

#### GIS-Enabled Evidence for Investment and Rehabilitation Planning

A total of 376 non-functional arsenic-safe water points were listed and mapped with GPS coordinates, providing evidence for targeted rehabilitation and investment planning.

### Achievement

#### Scaling WSP-Compliant Infrastructure Through Community Governance

Over 14,200 water point O&M committees were formed and oriented on climate-resilient Water Safety Planning (CR-WSP), ensuring routine monitoring and safe management of community water sources.

#### Strengthening Water Quality Surveillance for Early Risk Detection

45 monitoring charts were installed at Union Parishads and DPHE offices, supporting structured water quality tracking. Regular reporting and surveillance were embedded into WATSAN committee functions, improving early detection of contamination risks.

#### Building Technical Capacity of Caregivers and Communities

Around 8,200 caretakers were trained on O&M of water systems and CR-WSP, enhancing their technical capacity to ensure safe water at household and community levels. More than 20,850 community leaders and 22,470 people were oriented on WSP principles, strengthening grassroots awareness and accountability.

#### Community-Led O&M and Local Resource Mobilization



## 2. Sustainable Agriculture, Food and Environment

### Overview

In 2024–2025, EPRC reinforced its commitment to linking safe water, sustainable agriculture, and environmental health as part of building community resilience. During this period, our work focused on addressing groundwater contamination—particularly arsenic and salinity—which continues to threaten both drinking water and irrigation safety. By promoting climate-resilient and locally adapted water technologies, we reduced contamination risks while improving access for marginalized and vulnerable groups.

EPRC also advanced food security through support for sustainable agricultural practices in climate-affected regions. Initiatives emphasized crop diversification, resilient varieties, and improved post-harvest management, alongside training for farmers and community groups on safe irrigation, soil health, and environmentally sound techniques. These efforts aimed to strengthen both household nutrition and long-term agricultural sustainability.

Collaboration and capacity building remained central to this work. By engaging local governments, extension services, NGOs, and community organizations, EPRC ensured that interventions were inclusive, evidence-driven, and community-owned. These efforts contributed directly to Bangladesh’s progress toward national goals and the Sustainable Development Goals, particularly SDG 2 (Zero Hunger), SDG 6 (Clean Water and Sanitation), and SDG 13 (Climate Action).



## 2.1 SUSTAINABLE AGRICULTURE AND FOOD SECURITY

### Approach

In 2024–2025, EPRC strengthened its commitment to advancing sustainable agriculture and food security by prioritizing access to safe, reliable, and climate-resilient water sources for vulnerable, agriculture-dependent communities. Understanding the dual threats posed by arsenic contamination and salinity intrusion—not only to drinking water but also to irrigation and crop health—EPRC adopted a targeted, equity-driven approach.

Efforts focused on mitigating arsenic risks through the strategic installation and rehabilitation of arsenic-safe water points in high-exposure rural areas. Complementing this, EPRC promoted the adoption of climate-adaptive and locally appropriate water supply technologies that serve both domestic and agricultural needs.

Beyond infrastructure, EPRC invested in strengthening local governance and community-led resource management. By building the capacity of local governments and grassroots organizations, the initiative empowered communities to take ownership of water planning and management—laying a stronger foundation for long-term food security and environmental sustainability.

### Achievement

#### **Expanding Arsenic-Safe Water Access for Health and Food Security**

EPRC significantly expanded access to arsenic-safe water by installing and rehabilitating nearly 6,000 water points across project areas, including deep and shallow tube wells. These interventions ensured year-round safe water for tens of thousands of vulnerable people while also improving irrigation safety, which directly supports food security. The rehabilitation of previously non-functional arsenic-safe water points played a vital role in restoring services for thousands of households who were at risk of exposure to contaminated sources.

#### **Prioritizing the Most Vulnerable: Equity-Driven Water Access Planning**

Equity was placed at the center of planning and implementation, with a focus on reaching the ultra-poor, marginalized, and hard-to-reach communities. More than 6,000 underserved water points were identified and submitted for future action, ensuring that resources are directed to areas of greatest need. This approach allowed EPRC to close service gaps and prioritize communities where arsenic contamination, salinity, and water scarcity posed the most severe risks to health, livelihoods, and food systems.

#### **Empowering Communities through Governance and Capacity Building**

Strengthening local capacity remained a cornerstone of the program. Over 20,000 CBO leaders and committee members were capacitated to manage local water systems. Additionally, 14,000+ O&M committees were formed and oriented, engaging nearly half a million water users in the governance of safe water systems. This broad-based capacity development has laid the foundation for sustainable management of water infrastructure and empowered communities to safeguard their own health and food security.

#### **Institutionalizing Integrated and Inclusive Water System Management**

To strengthen institutional and community-level governance, Committees were re-activated and regularized, while WSP Corners were established in every intervention union equipped with water quality testing kits and IEC tools. Monitoring mechanisms were introduced at both Union and Upazila levels, ensuring regular oversight and accountability. Through these platforms, communities, local governments, and service providers worked together to plan, implement, and monitor safe water interventions, reinforcing a coordinated and inclusive approach to resource management.

#### **Advancing Climate-Resilient Water Solutions and Local Innovation**

EPRC placed strong emphasis on the promotion of climate-resilient water technologies to safeguard communities against the impacts of salinity, drought, and flooding. Caretakers and CBOs were trained on climate-resilient water safety planning, while local entrepreneurs received capacity building on arsenic-safe and innovative water solutions.

### 3. Disaster Risk Reduction and Climate Change Adaptation and Mitigation

#### Overview

Bangladesh remains acutely vulnerable to the accelerating impacts of climate change—from severe flooding and cyclones to groundwater contamination, salinity intrusion, and extreme weather events that threaten both human well-being and environmental sustainability. In 2024–2025, EPRC reinforced its integrated approach to disaster risk reduction (DRR) and climate adaptation by focusing on equity-driven, locally relevant, and community-led solutions in regions most at risk.

This year, EPRC played a critical role in the North-Eastern Flood Response during the devastating monsoon floods of August–September 2024. Working alongside local partners and affected communities, EPRC mobilized emergency support while strengthening long-term adaptive capacities. Our interventions emphasized restoring access to safe water in inundated areas, deploying flood-resilient water supply systems, and supporting local institutions in planning for future climate shocks.

In line with our ongoing priorities, we continued to address the chronic water vulnerabilities in arsenic- and salinity-affected regions—particularly coastal and riverine zones—where climate change intensifies the challenges to safe drinking water and sustainable agriculture. EPRC expanded the use of arsenic mitigation strategies, promoted climate-resilient water technologies, and built the capacities of local governments and community-based organizations to manage water systems more effectively and inclusively.

By embedding DRR and climate adaptation into local planning and service delivery, EPRC worked to enhance resilience not just to immediate disasters, but also to the slow-onset impacts of climate change. Our efforts remain rooted in data-driven decision-making, community empowerment, and a commitment to leaving no one behind in building a safer, more climate-resilient Bangladesh.



## 3.1 ARSENIC MITIGATION IN CLIMATE VULNERABLE REGIONS

### Approach

EPRC's arsenic mitigation strategy in 2024-2025 continued to prioritize climate-vulnerable regions where arsenic contamination intersects with environmental stressors, such as saline-prone coastal belts and hydro-geologically fragile lowlands. Recognizing that communities in these areas face compounded risks from arsenic, salinity intrusion, flooding, and prolonged droughts, EPRC applied a context-sensitive and resilience-focused approach to safeguard water security for the most at-risk populations.

Central to this strategy was an equity-driven site selection process, which ensured that poor and ultra-poor households exposed to both arsenic and climate shocks were prioritized for intervention. Rather than promoting generic solutions, EPRC advanced climate-resilient water supply technologies capable of withstanding salinity intrusion, seasonal variability, and disaster impacts—tailoring interventions to local ecological and socio-economic conditions.

At the institutional level, EPRC strengthened the arsenic risk management capacity of government and community stakeholders. Training sessions equipped DPHE personnel, local government representatives, and NGOs with skills in water safety planning, arsenic screening, and risk assessment. This capacity-building effort reinforced local ownership of arsenic mitigation and embedded it within broader climate-resilient WASH governance.

Additionally, EPRC expanded the use of GIS-based hotspot mapping and multi-year testing data to track contamination patterns and identify priority intervention zones. This data-driven approach enabled more precise targeting of investments and reduced long-term exposure risks in areas where aquifer safety is becoming increasingly uncertain due to climate change. By linking arsenic mitigation with climate adaptation, EPRC's strategy in 2024-2025 moved beyond immediate water provision toward building sustainable, community-centered systems that safeguard health and resilience in the face of evolving environmental challenges.



**Strengthening Climate-Resilient WASH Systems**

More than 6,000 arsenic-safe water points (DTW, RWH, tap points, PSF, RO, AIRP) were installed or rehabilitated across climate-stressed regions, including saline-prone coastal areas and flood-affected upazilas, ensuring year-round access to safe water for thousands of vulnerable households. A further 230 previously non-functional water points were rehabilitated with GPS tracking, directly benefiting about 22,700 vulnerable people in disaster-prone areas.

**Arsenic-Safe Water Access**

A total of 376 non-functional arsenic-safe water points were identified, GPS-mapped, and cost-estimated, providing a baseline for prioritizing future investment in high-risk unions and upazilas. Community-based O&M structures (14,235 committees) were formed and oriented on climate-resilient Water Safety Planning (CR-WSP), integrating risk-based decision-making into future water system design and maintenance.



**Arsenic-Safe and ODF Declarations in Climate-Sensitive Rural Areas**

A combined 691 communities and 89 villages were declared arsenic-safe with ODF, reducing dual risks from unsafe water and unsafe sanitation in vulnerable rural areas. An additional 1,463 communities and 203 villages achieved ODF status, further reinforcing community resilience to flood-related contamination.

**Community Empowerment**

376 arsenic-safe water points were listed with GPS and rehabilitation cost estimates, strengthening evidence-based planning in regions facing aquifer uncertainty from salinity and flooding. Community-based water safety monitoring systems (36 WSP corners, 45 monitoring charts) were established to improve climate-linked surveillance of arsenic risks.

**Community Engagement in High-Risk Regions**

More than 691,800 people were reached with WASH and arsenic awareness education, including risk communication on arsenic exposure in climate-vulnerable areas. Over 43,600 courtyard sessions and 200+ public events (World Water Day, National Sanitation Month, MHM Day, Global Handwashing Day) created open platforms to discuss arsenic health risks linked to flooding, salinity, and drought conditions.

## 3.2 EMERGENCY RESPONSE TO NORTHEASTERN FLOOD IN 2024

### Approach

In response to the severe flooding that struck Sonagazi Upazila of Feni District in August–September 2024, EPRC adopted a phased and need-responsive emergency relief strategy to support the most vulnerable households. The approach was designed to address both immediate survival needs and short-term recovery requirements, while ensuring community participation and leveraging diverse funding sources.

EPRC prioritized quick delivery of ready-to-eat and life-saving supplies to households stranded by floodwaters. A total of 235 households were reached with emergency packets containing beaten rice, biscuits, sugar, oral saline, essential medicines, bottled water, candles, and matches. Each packet, costing BDT 875, was financed through contributions from EPRC, QH, and personal donations, ensuring fast mobilization of resources to save lives and prevent dehydration, hunger, and waterborne disease outbreaks.

As floodwaters receded, EPRC shifted focus from survival rations to basic food and cooking essentials for sustaining households during the recovery period. A total of 275 households were provided with food packets containing rice, pulse, potato, soybean oil, onion, and salt. With per-packet costs of BDT 750, this support was made possible through joint contributions from EPRC field staff, and Manab Kalyan Sangstha (Pabna). This phase helped flood-affected families regain basic nutritional stability and supported the resumption of normal cooking practices.

Recognizing that some families required flexible financial support to address urgent needs beyond food, EPRC provided cash assistance of BDT 2,000 each to 17 highly affected families. This approach enabled households to prioritize spending on shelter repair, medicine, or other pressing recovery requirements, while preserving dignity and autonomy in decision-making.



### Achievement

#### Immediate Relief Distribution

235 flood-affected households in Sonagazi Upazila, Feni received emergency survival packets. Each packet (worth BDT 875) contained beaten rice, biscuits, sugar, oral saline, medicines, bottled water, candles, and matches. Relief was funded through EPRC, QH, and personal contributions, ensuring rapid mobilization.

#### Food Security Support

275 households in Sonagazi Upazila were supported with essential food items to restore nutritional stability. Each packet (worth BDT 750) included rice, pulse, potato, soybean oil, onion, and salt. Funded by EPRC, UNICEF field staff, and Manab Kalyan Sangstha (Pabna).

#### Cash Assistance for Recovery

17 highly affected families received cash grants of BDT 2,000 each. This enabled households to meet urgent recovery needs, including shelter repair, medical expenses, and livelihood support.

## 4. PUBLIC HEALTH

### Overview

In 2024–2025, EPRC continued its mission to safeguard public health in Bangladesh’s most vulnerable communities through an integrated, equity-centered approach. This year, our efforts focused on improving Water, Sanitation, and Hygiene (WASH) systems in areas facing acute environmental and climate-related health risks.

Recognizing the foundational role of clean water and hygiene in preventing disease and promoting well-being, EPRC scaled up access to safe, arsenic-free, and climate-resilient water sources—particularly in saline-affected and arsenic-prone regions. Guided by equity-based site selection, we prioritized service delivery for marginalized households in remote and disaster-prone communities.

To reinforce hygiene practices and reduce the spread of waterborne and communicable diseases, EPRC expanded community-based hygiene promotion, installing low-cost handwashing stations and conducting sustained behavior change communication. These interventions drew on evidence and community feedback to ensure practical adoption and long-term impact.

During climate-induced emergencies, such as the North-Eastern Floods of August–September 2024, EPRC responded rapidly to protect public health by distributing hygiene kits, restoring access to clean water, and supporting emergency sanitation facilities for flood-affected families.

Through these focused and locally tailored WASH initiatives, EPRC advanced its commitment to public health by improving daily living conditions, reducing disease risks, and strengthening community resilience. Our approach remains grounded in data, inclusivity, and sustainability—ensuring that health systems respond to both immediate needs and long-term challenges in an evolving climate landscape.



## 4.1 ENSURE PUBLIC HEALTH THROUGH WASH PROGRAM

### Approach

EPRC's approach to ensuring public health through WASH is rooted in the understanding that safe water, sanitation, and hygiene are fundamental to disease prevention and community well-being. The strategy emphasizes expanding access to arsenic-safe and climate-resilient water supply systems alongside improved sanitation facilities that reduce health risks. Equal importance is given to hygiene promotion, menstrual health awareness, and behavior change communication, which are integrated into schools, communities, and public campaigns. Community ownership and sustainability are fostered by strengthening the capacity of local organizations, caretakers, and leaders to manage and maintain WASH systems effectively. At the institutional level, water safety planning, arsenic risk monitoring, and GIS-based hotspot mapping are embedded into local governance structures, enabling evidence-based decisions. The approach is guided by a strong equity and climate resilience lens, prioritizing women, children, the ultra-poor, and marginalized groups in vulnerable areas to ensure that WASH interventions protect health, empower communities, and build long-term resilience.

### Achievement

#### Expanded Access to Safe Water

Over 6,000 arsenic-safe and climate-resilient water points were installed or rehabilitated, providing safe drinking water to thousands of people in arsenic-affected, saline-prone, and flood-vulnerable areas, thereby reducing risks of waterborne diseases.

#### Improved Sanitation Coverage

Nearly 100,000 unhygienic latrines were converted to hygienic ones and about 2,000 new improved latrines installed, reducing fecal contamination and protecting community health.

#### Hand Hygiene Promotion

More than 102,700 households adopted handwashing devices (tippy taps/buckets with taps), complemented by 43,600 courtyard sessions and awareness campaigns that reinforced handwashing with soap as a critical health behavior.

#### Behavior Change and Health Education

Approximately 691,800 people were reached with WASH education and hygiene promotion, leading to greater awareness of safe practices and reduction of disease transmission risks.

#### Community Health Protection through ODF Declarations

1,463 communities and 203 villages were declared ODF, while 691 communities and 89 villages achieved arsenic-safe with ODF status—ensuring integrated protection from unsafe sanitation and contaminated water.

#### Capacity Strengthening for Health-Sensitive WASH

Over 20,850 community leaders and 8,200 caretakers were trained on water safety planning, arsenic mitigation, and O&M, creating a skilled local workforce to sustain health-protective WASH systems.

#### Institutionalized Health Safeguards

36 WSP corners, 45 monitoring charts, and 36 reactivated WATSAN committees institutionalized health-centered water safety monitoring and governance mechanisms at local government levels.

#### Mass Public Health Campaigns

More than 200 large-scale events (World Water Day, Global Handwashing Day, Sanitation Month, MHM Day) mobilized schools, CBOs, and local institutions to promote hygiene practices and address critical health risks.

## 5. EDUCATION, TRAINING AND CAPACITY BUILDING

### Overview

In 2024–2025, EPRC continued to invest in education, skills development, and institutional capacity building with a sharper focus on gender equity, inclusive water governance, and educational access for marginalized groups. Our initiatives this year reflected a shift toward systemic change—empowering individuals and organizations to become active participants in sustainable development.

One of our flagship initiatives focused on promoting Gender Equality in Integrated Water Resources Management (IWRM). Through targeted training and leadership development, EPRC mobilized mid-level women professionals working in the water sector, equipping them with the technical, strategic, and communication skills needed to advance gender-inclusive water governance. Participants were encouraged to apply their learning within their own institutions, helping to mainstream gender considerations into water planning and policy.

Complementing this, EPRC launched a capacity-building program aimed at enhancing private sector engagement in scaling up access to safe drinking water. This initiative worked at the intersection of policy, systems strengthening, and sustainable service delivery. Through workshops, technical assistance, and stakeholder consultations, EPRC supported local entrepreneurs and service providers to deliver safe, affordable, and sustainable water solutions—especially in underserved and hard-to-reach areas.

In parallel with these water-sector-focused efforts, EPRC continued to implement the Out of School Children (OOSC) Education Program under PEDP-4, targeting children aged 8–14 who had never enrolled in or had dropped out of formal education. Using a flexible, community-based model, the program established non-formal learning centers that offered an accelerated curriculum equivalent to Grades 1–5. Upon completion, learners received certification recognized within the national education system. The program prioritized outreach to children from remote, marginalized, and vulnerable communities, including ethnic minorities and children with disabilities, with a strong emphasis on gender equity and inclusive learning.

Together, these programs reflect EPRC’s commitment to advancing inclusive education and capacity development across sectors. Whether by empowering women in water leadership, supporting private actors in service delivery, or creating pathways for out-of-school children to re-enter the education system, EPRC is working to build a future where no one is left behind.



## 5.1 OUT OF SCHOOL CHILDREN (OOSC) EDUCATION PROGRAM

### Approach

To advance the government's commitment under PEDP-4, BRAC continues to serve as the Implementation Supporting Agency (ISA), while EPRC plays a key role as the Implementation Assisting Agency (IAA). The Out of School Children (OOSC) Education Program adopts a flexible, inclusive, and community-responsive model aimed at reintegrating marginalized children aged 8–14 into the education system. Special emphasis is placed on reaching those most at risk of exclusion, including children from remote rural areas, urban slums, ethnic and religious minorities, and children living with disabilities.

The program begins with comprehensive mapping and household-level identification of OOSC in Cumilla district. Once identified, learners are enrolled in non-formal Learning Centers (LCs) located close to their homes. These centers deliver an accelerated learning curriculum equivalent to grades 1–5 within a condensed three-year cycle, enabling older children to catch up and smoothly transition to formal secondary education or vocational training. During FY 2024–25, EPRC as IAA operated 10 LCs in Ward No. 22 and 23 of Cumilla City Corporation and 30 LCs in rural Monoharganj Upazila, providing accessible pathways to education for out-of-school children.

The program is delivered by locally recruited and trained teachers who provide competency-based, child-friendly instruction in safe and supportive learning environments. Flexible schedules, continuous assessment methods, and integration of life skills education ensure that learners remain engaged and motivated. Strong community involvement in center management and learner retention reinforces accountability and sustainability, while partnerships with NGOs and local institutions strengthen outreach, quality monitoring, and support services. This integrated approach ensures that the OOSC program remains equitable, scalable, and responsive to the evolving needs of marginalized children in climate- and poverty-affected contexts.

### Achievement

#### Learning Centre

The Out of School Children (OOSC) Education Program achieved another year of full success in Cumilla, with 40 Learning Centers established and operated across Cumilla City Corporation and Monoharganj Upazila. A total of 1,500 children were enrolled and completed primary education up to Grade V by December 2024, fulfilling both enrollment and learning completion targets under PEDP-4.

#### Academic Outcomes

Students demonstrated improved academic outcomes and holistic development—achieving literacy in Bengali and English, mastering fundamental mathematics including fractions, and participating in creative activities such as drawing and handicrafts. This reflects the program's commitment to nurturing well-rounded learners prepared for the next stages of education.

#### Learning Model

The accelerated and flexible learning model enabled children aged 8–14, who had previously been left behind, to complete a full primary cycle within 3–4 years. This approach created opportunities for smooth transition into formal secondary education or vocational training, ensuring that older learners could pursue age-appropriate educational pathways.

#### Community Engagement and Institutional Capacity

At the same time, the program strengthened community engagement and institutional capacity. Parents and local communities became active supporters of their children's education, while teachers and facilitators benefited from structured training that enhanced their ability to deliver inclusive, child-centered instruction.

#### Reduce Educational Disparities

Overall, the OOSC Education Program in Cumilla has once again proven effective in reducing educational disparities, empowering underserved families, and advancing Bangladesh's national commitment to universal primary education under PEDP-4.

## 5.2 GENDER EQUALITY IN INTEGRATED WATER RESOURCES MANAGEMENT (IWRM)

### Approach

The workshop, jointly organized by EPRC and Bangladesh Water Partnership (BWP), aimed to strengthen the knowledge and leadership of women professionals in the water sector by promoting gender equality through IWRM principles and participatory approaches. It brought together mid-level government officials, NGO representatives, and community stakeholders.

The methodology was highly participatory, combining technical presentations, policy discussions, case studies, and open dialogue. Key themes included principles of IWRM, policy and guidelines for gender integration, community participation in decision-making, and monitoring of gender-sensitive projects.

The one-day program featured lectures by experts, interactive group discussions, and knowledge sharing among participants. Outcomes included enhanced understanding of gender mainstreaming in WRM, increased awareness of participatory governance models, and strengthened commitment of participants to apply inclusive practices within their organizations and communities.

### Achievement

#### Women's Leadership Mobilized

Strengthened the role of women professionals in Water Resources Management (WRM).

#### Capacity Enhanced

Improved knowledge of IWRM principles, gender integration, and participatory governance.

#### Inclusive Participation Ensured

Engaged 20 participants from government, NGOs, and local institutions.

#### Professional Network Built

Fostered collaboration among women professionals in the water sector.

#### Practical Recommendations Generated

Developed actionable inputs for gender-inclusive water governance and monitoring.

#### Commitment Reinforced

Encouraged participants to apply inclusive practices within their organizations and communities.



## 5.3 CAPACITY BUILDING AND SKILL ENHANCEMENT OF PRIVATE SECTOR ENGAGED IN SAFE DRINKING WATER

### Approach

EPRC is partnering with the Department of Geology, University of Dhaka (DU) under the UNICEF-supported program “*Strengthening the Institutional Capacity of the Private Sector (local drillers) for Arsenic-Safe Drilling and Establishing a National Groundwater Monitoring System for Informed Decision-making.*” This collaboration builds on EPRC’s extensive grassroots experience and DU’s technical expertise to enhance safe water access and sustainable groundwater management across nine upazilas.

Under this approach, EPRC is supporting DU in conducting community and technical surveys, facilitating baseline social and hydrogeological data collection, and assisting in field-level investigations. EPRC provides office setup, logistics, and IT support to local field facilitators, ensuring that DU’s hydrogeological teams have access to community networks, field offices, and storage facilities for sediment samples. Through its operational presence, EPRC also helps DU organize training programs, workshops, and stakeholder meetings, while ensuring smooth coordination with local government institutions, DPHE, and communities.

The partnership also emphasizes capacity development and institutional strengthening. EPRC assists DU in identifying, recruiting, and supervising local facilitators, while ensuring accountability in field operations. Together, DU and EPRC are promoting the registration, training, and certification of local drillers, establishing automatic groundwater monitoring networks, mapping aquifers, and disseminating water safety guidelines. At the same time, EPRC is leading community-level awareness and IEC campaigns on arsenic-safe drilling, water testing, and water sharing, thereby bridging scientific research with social mobilization.

Through this collaborative approach, EPRC and Dhaka University are creating a model that combines technical excellence, community engagement, and institutional capacity—supporting the Government of Bangladesh and UNICEF’s vision of safe, sustainable groundwater use in alignment with national water goals and SDG 6 (Clean Water and Sanitation).



## Achievement

### **Support for Evidence Generation**

Facilitation of community and technical surveys, enabling the collection of social and hydrogeological data that will contribute to establishing a national groundwater monitoring system.

### **Field-Level Technical Support**

Assistance to Dhaka University teams in conducting detailed hydrogeological investigations, aquifer mapping, and baseline resource assessments across selected upazilas.

### **Strengthening Local Capacity**

Contribution to the training, registration, and certification of local drillers, thereby professionalizing the sector and ensuring safer arsenic-free drilling practices.

### **Groundwater Monitoring Network**

Establishment of automatic groundwater monitoring systems in selected upazilas to continuously track hydrogeological conditions and inform evidence-based decision-making.

### **Institutional Collaboration**

Reactivation and strengthening of local government and DPHE engagement through workshops, seminars, and training programs organized with EPRC's logistical and office support.

### **Community Awareness and Mobilization**

Implementation of IEC campaigns, FGDs, and awareness events on arsenic-safe drilling, water testing, and water sharing to improve public understanding and demand for safe water.

### **Data Sharing and Knowledge Exchange**

Contribution to a national water dashboard by sharing collected data, enabling government officials and stakeholders to make informed policy and planning decisions.

### **Resource and Infrastructure Support**

Provision of local office space, IT facilities, logistics, and storage for sediment samples to ensure smooth project execution in nine upazilas.



## 5.4 GANET-SA PROGRAM

### Overview

The Global Applied Research Network -South Asia (GARNET-SA) is one of the EPRC's programs and its global coordination is conducted by EPRC in collaboration with an Advisory Committee. The main objective of the network is to build capacity of the professionals/practitioners based on exchange of applied research related information on drinking water, sanitation, environment, agriculture and climate change adaptation. It is a member demand-based network. The specific activities and topics of interests are updated /modified according to the suggestions of the members. It is a voluntary and open-to-all knowledge exchange initiative organized by local and international professionals. The network advisory committee comprised of representatives from Bangladesh Water Resources Planning Organization (WARPO), Department of Environment (DOE) World Health Organization Bangladesh, UNICEF Bangladesh, BCSIR, WEDC, Loughborough University UK, OSAKA, Japan, Indian Institute of Bio-Social Research and Development (IBRAD), All India Institute of Public Health and John Hopkins University USA. Recently GARNET-SA India has been launched by Indian Institute of Bio-Social Research and Development (IBRAD). Professor S. B. Roy, Chairman of IBRAD is coordinating it in collaboration with Dr Bilqis Amin Hoque.

The GARNET-SA began functioning formally in Bangladesh in April, 1992. It was launched by a group of professionals from ICDDR, UNICEF, Department of Public Health Engineering (DPHE), Department of Disaster Management (DDM), DFID, WHO, Bangladesh Council of Scientific & Industrial Research (BCSIR), Agency for Social, Forestry & Environmental Conservation (ASFEC), Development Association for Cooperation in Bangladesh (DACOB), CARE Bangladesh, following a workshop on "Mobilization of Non-governmental Organizations (NGOs) in water supply and sanitation" in BRAC Auditorium Rajendrapur on April 12-13, 1992. The GARNET-Bangladesh joined the global GARNET by the Water Engineering and Development Center (WEDC) at Loughborough University, UK and The Water Supply and Sanitation Collaborative Council (WSSCC) in 1995. The Network then scaled-up its activities to South Asia and international level in 1997 in collaboration with WEDC (as GARNET-SA). The secretariat of GARNET-SA moved from ICDDR to EPRC in 2000. Currently there are approximately 600 organization members from different kinds of organizations in Bangladesh and other countries in South Asia, USA, UK and Japan. The memberships are offered to different organizations. Individuals can become members in specified cases. Application forms can be obtained from EPRC offices and this website. Dr. Bilqis Amin Hoque was the Coordinator/Principal Investigator of the network since its formation until her death in August 01, 2023. Now the network is coordinated by Dr. M Mozzammel Hoque, Executive President, EPRC.

The main activities of GARNET-SA include holding workshops and seminars, organizing training, collaborative research and educational program, production of six-monthly newsletters and other reports as well as communication materials, and collaborative relief and recovery activities in hazards/disasters. GARNET-SA has been organizing four or more local information sharing and training workshops per year. As of 2010 it has organized 40 numbers of national & 05 numbers of international conferences, conducted a few collaborative researches on development of arsenic removal technology (Home-made Emergency GARNET filter) and other issues, produced communication materials with member organizations, provided environmental, hygiene, ORS and other relief support in almost all disasters in Bangladesh, and done other activities in collaboration with member organizations. The local workshops have been designed to build the capacity of small NGOs, schools, local government institutions and other local stakeholders as demanded by the local GARNET-SA members. In addition, six monthly GARNET newsletters have been produced and distributed among the members since 1996. GARNET-SA sincerely appreciates your and your organization's contribution to the continuing realization of its objectives and implementation of the activities.

## 6. QUEST HUMANITY PROGRAM

### Overview

The Quest Humanity Program represents EPRC's flagship initiative for holistic human development, designed to uplift marginalized and vulnerable groups across Bangladesh. It responds to the interconnected realities of poverty, exclusion, and insecurity that continue to undermine the well-being of disadvantaged communities, particularly women, children, and disaster-affected families.

Anchored in EPRC's vision of social justice and inclusive growth, the program brings together interventions across education, health, nutrition, empowerment, and livelihoods. Its portfolio includes alternative education and skills training for orphaned and disadvantaged children, school readiness and nutritional support for underprivileged learners, awareness and empowerment programs for women, targeted nutrition services for pregnant mothers, and financial support to households in economic distress. In times of crisis, the program also mobilizes emergency relief distribution, while in stable periods it prioritizes self-employment training and material support—with a strong focus on women's economic independence.

By combining immediate assistance with long-term capacity building, the Quest Humanity Program aims to break entrenched cycles of poverty and vulnerability. It works to foster self-reliance, restore dignity, and create new opportunities for the most excluded groups. Going forward, EPRC is committed to broadening the reach and deepening the impact of this program, contributing to a more equitable, resilient, and compassionate society in which no one is left behind.



## Approach

EPRC's Integrated Education and Skill Development Program continues to provide a lifeline for orphaned and disadvantaged children and adolescents who lack family support and financial security. Established through the vision of EPRC's late founding president, Professor Dr. Bilqis Amin Hoque, the initiative operates at Jamiaul Ulum Madrasa in Mautupi-Mandartali village of Matlab Uttar Upazila, Chandpur, since June 2022. The program is rooted in the belief that education, when combined with care and dignity, can transform the lives of the most vulnerable.

The approach prioritizes a safe, nurturing, and culturally grounded learning environment that addresses both academic and everyday needs. Following the Befaqul Madarisil Arabia Bangladesh (BEFAQ) curriculum, the madrasa offers a well-rounded education covering Arabic, Bangla, Mathematics, English, and general knowledge, structured across three levels: *Nurani* (pre-primary), *Nazera* (Qur'an recitation), and *Hifzul Qur'an* (memorization).

Beyond academics, the program emphasizes comprehensive child welfare. Students are supported with free textbooks, notebooks, and stationery, alongside three nutritious meals daily, safe accommodation, regular sanitation facilities, and opportunities for recreation. Equal attention is given to moral education, mental well-being, and spiritual development, ensuring that children grow into confident, resilient individuals capable of contributing positively to society.

## Achievement

### Sustained Educational Platform

Continued operation of Jamiaul Ulum Madrasa under the Quest Humanity Program, serving orphaned and disadvantaged children in rural Chandpur.

### Recognized Curriculum Pathway

Delivered a recognized BEFAQ-affiliated curriculum covering Arabic, Bangla, Mathematics, English, and general knowledge.

### Progressive Learning Structure

Maintained three levels of education—*Nurani* (pre-primary), *Nazera* (Qur'an recitation), and *Hifzul Qur'an* (memorization)—ensuring age-appropriate and faith-based learning.

### Equity in Access

Provided completely free education to 42 vulnerable children, ensuring that poverty did not limit access to learning.

### Learning Resources Assurance

Distributed textbooks, notebooks, stationery, and other learning materials to all students, supporting equal opportunities for study.

### Holistic Care and Well-being

Ensured three nutritious meals daily, alongside safe boarding facilities, clean sanitation, safe drinking water (deep tube-well), and recreational space.

### Dignity and Cultural Support

Supplied new clothing annually and offered special meals during Ramadan, upholding dignity and cultural values for children.

### Future-Oriented Vision

Sustained a forward-looking vision of preparing students for higher-standard education, lifelong learning, and self-reliance.



## 6.2 EDUCATION & NUTRITION PROGRAM FOR UNDERPRIVILEGED CHILDREN

### Approach

Launched in 2020, the Education and Nutrition Program by EPRC continues to serve as a lifeline for underprivileged children in Tongi, Gazipur. These children—often left unattended while their parents work long hours in garment factories or as day laborers, many of whom are single mothers—remain at high risk of neglect, child labor, substance abuse, and early involvement in criminal activity.

Now in its fifth year, the program provides a safe and nurturing learning environment for a full year, acting as both a bridge to formal education and a protective space during vulnerable hours. Children receive free foundational education, daily nutritious meals, and emotional care designed to build resilience and confidence.

The program's curriculum integrates core subjects such as Bangla, mathematics, general knowledge, and behavioral and religious education, taught by compassionate educators who offer not only instruction but also consistent, maternal-like support. To promote mental and emotional development, weekly cultural and recreational activities are organized, helping children develop essential social skills and emotional intelligence.

Driven by the generosity of community supporters and aligned with our broader mission to break cycles of poverty and marginalization, this initiative supports working mothers, protects vulnerable children, and nurtures their path toward lifelong learning and well-being.

### Achievement



#### Consistent Impact Since 2020

For five consecutive years, the program has operated in Tongi, providing a lifeline for highly vulnerable children through consistent, year-round support.

#### Safe Havens for Learning and Care

Maintains a secure, nurturing environment where children engage in structured learning and supervised daytime care—safeguarding them from child labor, street hazards, and exploitation.

#### Steady Growth in Reach and Participation

From just 8 children in its first year, the program now supports an average of 25 children annually. As of 2025, a total of 141 children have benefited, with 26 children currently enrolled.

#### Comprehensive Educational Support

Offers a well-rounded curriculum that includes Bangla, mathematics, general knowledge, religious values, and behavioral education. All enrolled children receive free access to books, notebooks, pens, and learning materials.

#### Daily Nutritional Support

Provides hot, nutritious lunches every day, addressing food insecurity and supporting the physical health and concentration of each child.

#### Individualized Instruction with Heart

Led by a committed educator who delivers lessons with genuine warmth and emotional care, helping children build trust, self-esteem, and a love of learning.

#### Promoting Holistic Child Development

Weekly cultural and recreational activities nurture creativity, emotional well-being, and social skills, contributing to balanced child development.

#### Community-Powered and Poised for Expansion

Powered by the generosity of community donors and well-wishers. Looking ahead, the program aims to expand its services to reach over 100 underprivileged children in the coming years.

## 6.3 TRANSFORMING LIVES THROUGH LEARNING: WOMEN'S EDUCATION & AWARENESS PROGRAM

### Approach

Since its inception in 2015, EPRC's Women's Education and Awareness Program has been a vital platform for empowering women in Tongi who were denied access to formal education due to poverty, early marriage, cultural barriers, and household responsibilities. Understanding that traditional classroom settings are often out of reach for these women, EPRC developed a flexible, community-rooted model that brings education directly to them—right in their courtyards and neighborhoods.

What began as small, informal literacy circles has evolved into a structured weekly learning initiative that blends functional literacy with religious, moral, and social education. The program creates safe, supportive spaces where women—many for the first time—can engage in meaningful learning without having to leave their communities or disrupt their daily responsibilities.

Special month-long courses during Ramadan further enrich the program, combining basic Islamic education with collective Tarawih prayers and spiritual reflection. This holistic approach not only builds knowledge but also strengthens community bonds and personal confidence.

Grounded in local realities, EPRC regularly conducts community needs assessments to adapt the program to participants' evolving goals. Looking forward, the program aims to develop customized learning modules, expand resource materials, and establish dedicated learning centers to support skill-building and long-term empowerment.



### Achievement

#### A Decade of Consistent Engagement

Nearly ten years of uninterrupted education and awareness activities, offering critical support to women in Tongi who have long been excluded from formal learning.

#### Neighborhood-Based Learning Access

Brought education directly into local communities—right in courtyards and lanes—eliminating barriers like mobility restrictions, domestic responsibilities, and cultural limitations.

#### Structured Weekly Adult Learning Sessions

Conducted regular, tailored classes focused on basic literacy, numeracy, general knowledge, and life skills—designed specifically for adult women with little to no previous schooling.

#### Spiritual and Moral Enrichment

Delivered special Ramadan programs each year, featuring daily lessons on Islamic principles, group Tarawih prayers, and a focus on values-based personal development.

#### Growing Reach and Lasting Impact

Approximately 315 women have participated to date, gaining not only practical knowledge but also increased confidence, independence, and active roles in their communities.

#### Locally-Informed, Responsive Design

Guided by community feedback through demand assessments, ensuring the program remains relevant, respectful, and deeply rooted in the realities of participants' lives.

#### Vision for the Future: Scaling Up and Deepening Impact

Ongoing development of topic-specific training modules, culturally sensitive teaching resources, and plans for permanent community learning hubs to support long-term skills development and empowerment.

## 6.4 CARING FOR MOTHERS, NURTURING FUTURES: NUTRITIONAL SUPPORT & AWARENESS FOR PREGNANT

### Approach

Since its launch in 2021, EPRC's Nutritional Support and Awareness Program for Pregnant Women has been a vital intervention for improving maternal and newborn health in underserved areas like Tongi, Gazipur. In communities where access to prenatal care and nutrition remains limited, the program steps in to support expectant mothers facing increased health risks due to poverty, lack of education, and minimal healthcare access.

At the heart of the program is an equity-driven, community-based approach that targets economically vulnerable women with tailored, culturally sensitive care. It blends direct nutritional support with health education and family engagement to ensure lasting behavioral change.

Families are empowered to take ownership of maternal health through guided encouragement, while those in severe financial need receive monthly nutritional support grants of BDT 1,000 to purchase essential, healthy foods during pregnancy.

To maintain ongoing support and reinforce key messages, the program includes:

- Monthly in-person family sessions to discuss maternal nutrition, wellness, and preventive care;
- Regular follow-up calls to monitor progress, answer questions, and offer emotional support;
- A holistic focus that addresses not only physical well-being, but also mental and spiritual care—acknowledging the full spectrum of a mother's health needs.

This initiative reflects EPRC's long-term commitment to building healthier families by supporting women during the most critical phase of life: motherhood. Through education, empathy, and targeted assistance, we are helping shape a healthier, more informed next generation.

### Achievement

#### Focused Outreach to High-Risk Communities

Continued to serve low-income, underserved neighborhoods in Tongi, Gazipur—where pregnant women often lack access to basic prenatal care, health education, and nutritional support.

#### Targeted Nutritional Support Through Cash Assistance

Provided monthly cash grants of BDT 1,000 to help financially struggling families purchase nutritious food during pregnancy—ensuring better maternal and fetal health outcomes.

#### Promoting Family-Led Health Practices

Held monthly courtyard meetings with expectant mothers and their families to promote awareness of prenatal/postnatal care, nutrition, and the importance of routine checkups. Families were encouraged to contribute within their means toward the health of the mother.

#### Ongoing Mobile Follow-Ups

Used mobile phone-based follow-up and check-ins to maintain regular contact, reinforce health messages, and monitor behavioral changes between in-person sessions.

#### Positive Reach and Measurable Impact

To date, 48 pregnant women have directly benefited from the program's services—gaining vital support during a critical stage of their lives.

#### Forward-Looking Plans for Program Expansion

Future plans include expanding the program's reach, delivering home-based nutrition support, enhancing the quality and frequency of health awareness sessions, and strengthening maternal care services through trained field staff—pending additional funding and resources.



## 6.5 RESTORING DIGNITY THROUGH DIRECT SUPPORT: FINANCIAL ASSISTANCE FOR DISADVANTAGED FAMILIES

### Approach

Launched in 2015, EPRC's Financial Assistance Program for Economically Disadvantaged Families continues to play a vital role in the national effort to alleviate poverty—aligned with Sustainable Development Goal 1 and Bangladesh's 8th Five-Year Plan (2021–2025). The program directly addresses the daily struggles of families who lack the income security to meet basic needs such as food, shelter, healthcare, and education.

The program adopts a targeted, equity-focused approach, ensuring that assistance reaches the most vulnerable households. Support is intentionally flexible and responsive, designed to meet both ongoing and emergency needs:

- Monthly cash assistance is provided to selected families facing chronic poverty;
- One-time or situational support is offered to those dealing with sudden hardship or crisis.

By removing immediate financial pressure, the program not only helps families survive but also creates space for them to regain stability, protect their children's well-being, and work toward long-term resilience.

Above all, this initiative reflects EPRC's commitment to upholding dignity while promoting inclusion and opportunity for the most marginalized communities in Bangladesh.

### Achievement

#### Nearly a Decade of Steadfast Support

Since 2015, the program has operated without interruption—demonstrating long-term commitment to reducing poverty among Bangladesh's most vulnerable families.

#### Reliable Monthly Support for Basic Needs

Currently provides regular cash assistance to 5 low-income families, enabling them to meet essential needs like food, shelter, healthcare, and other daily expenses.

#### Timely Aid in Moments of Crisis

Delivered one-time or emergency financial support to families facing sudden hardship—such as medical emergencies, job loss, or other unexpected challenges.

#### Reducing Poverty, Promoting Inclusion

Helped marginalized households stabilize their living conditions, reduce exposure to hunger and homelessness, and restore a sense of dignity and hope.

#### Aligned with National & Global Development Agendas

Actively contributes to Sustainable Development Goal 1 (No Poverty) and supports Bangladesh's 8th Five-Year Plan by promoting inclusive, poverty-free growth.

#### Path Forward: Expanding Reach, Deepening Impact

Future plans include increasing the number of supported families and broadening the program's scope—strengthening EPRC's commitment to a more equitable, self-reliant society.

## Approach

EPRC's Self-Employment Training and Resource Distribution Program is a key initiative designed to empower marginalized communities—particularly women—by equipping them with the skills and tools necessary to achieve sustainable income and long-term financial independence.

Launched to tackle the intersecting challenges of poverty, unemployment, and gender inequality, the program offers practical skills training alongside the distribution of essential start-up materials, enabling participants to initiate or grow small-scale, home-based businesses. Target areas include tailoring, handicrafts, food processing, and agriculture—all selected for their cultural relevance and local market viability.

This approach is grounded in EPRC's commitment to inclusive development and directly contributes to Bangladesh's 8th Five-Year Plan, while aligning with SDG 1 (No Poverty), SDG 5 (Gender Equality), and SDG 8 (Decent Work and Economic Growth).

By combining capacity-building with resource empowerment, the program not only opens up livelihood opportunities but also promotes dignity, self-reliance, and a stronger role for women in household and community economies. Participants are empowered to transform their skills into income, reduce dependency, and take active steps toward breaking the cycle of poverty.

## Achievement

### 45 Women Trained for Livelihoods

Delivered hands-on training to 45 women across key income-generating sectors such as tailoring, handicrafts and food processing—with a strong focus on market-relevant skills that align with local economic realities.

### Start-Up Support for Sustainable Ventures

Distributed vital materials to help participants kickstart or expand their businesses, including:

- 03 sets instruments for food processing entrepreneurs
- Distributed 05 sewing machines
- A motorized carry van provided for marketing the products.

### Real Impact on Financial Independence

Approximately 50% of trained women reported enhanced financial autonomy and income stability, empowering them to contribute to household expenses and make independent economic decisions.

### Inclusive Targeting of the Most Marginalized

Prioritized women from low-income, low-education backgrounds—ensuring access to economic opportunity for those often left behind in traditional development efforts.

### Driving Progress Toward National and Global Goals

This program directly supports:

- SDG 1 – Ending poverty through sustainable livelihoods
- SDG 5 – Advancing gender equality by empowering women economically
- SDG 8 – Promoting decent work and inclusive economic growth
- And aligns with Bangladesh's 8th Five Year Plan commitment to inclusive, grassroots development.

## Our Development Collaborators and Partners

---

EPRC has maintained national and international partnerships for addressing the challenges and conducted/initiated many new and innovative researches, education, service and training activities.

### **International**

- Bill & Melinda Gates Foundation
- Asian Development Bank (ADB)
- World Bank Bangladesh (WB)
- Dutch Research Council (NWO)
- Global Water Partnership (GWP)
- All India Institute of Hygiene and Public Health (India)
- Japan International Cooperation agency (JICA)
- Child Health Foundation (CHF), USA
- Russell IPM, UK
- Stockholm Environment Institute, Sweden
- The Flora Family Foundation, USA
- FCDO (DFID) Bangladesh
- Ocean Foundation, USA
- The Asia Foundation (TAF)
- Qatar Charity
- Rotary International

### **Universities:**

- University of Dhaka, Bangladesh
- University of Washington, USA
- Delft University of Technology (TU Delft), Netherlands
- University of Washington, Seattle, USA
- University of Stirling, Scotland, UK
- WEDC at Loughborough University, UK
- Johns Hopkins University, USA
- Nagoya University, Japan
- The University of York, UK
- Columbia University, USA
- Bangladesh Agricultural University (BAU)
- Kyoto University, Japan
- University of Southampton, UK
- United Nations University, Japan
- University of Rajshahi, Bangladesh
- Pabna University of Science and Technology (PUST)
- Patuakhali Science & Technology University

### **National/GoB**

- Department of Public Health Engineering (DPHE)
- Bangladesh Water Development Board (BWDB)
- Bureau of Non-Formal Education (BNFE)
- Department of Environment (DOE)
- Bangladesh Climate Change Trust (BCCT)
- National Institute of Local Government (NILG)
- Local Government Engineering Department (LGED)
- Department of Agriculture Extension (DAE)
- Ministry of Health and Family Welfare (MoHFW)
- Department of Disaster Management (DDM)
- Bangladesh Rice Research Institute (BRRI)
- Rural Development Academy (RDA)
- Dhaka North City Corporation
- Ministry of Environment and Forest
- Bangladesh Livestock Research Institute
- Department of Livestock Services
- Bangladesh Agricultural Research Institute (BARI)

### **United Nations:**

- UNICEF, Bangladesh
- World Health Organization (WHO)